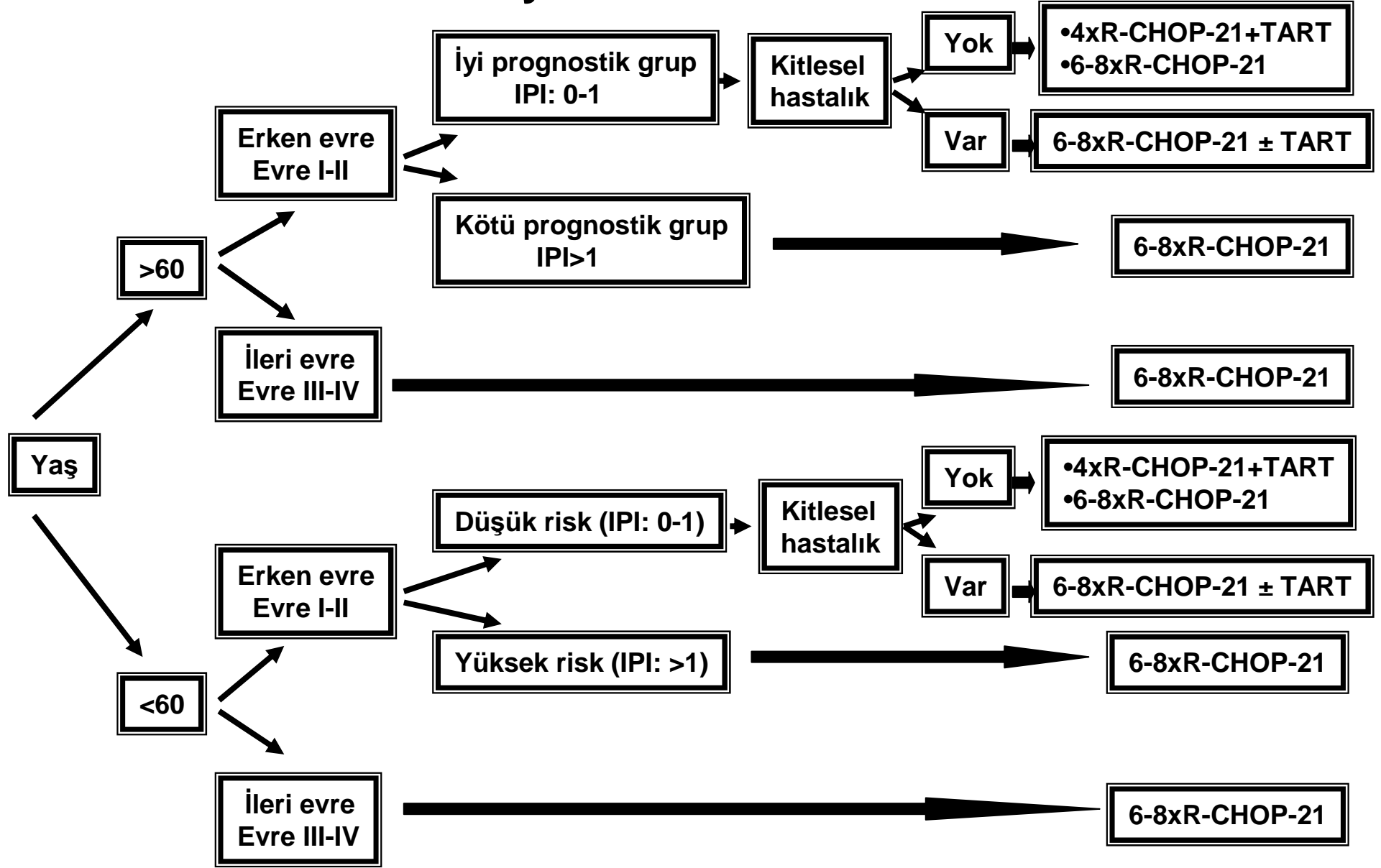
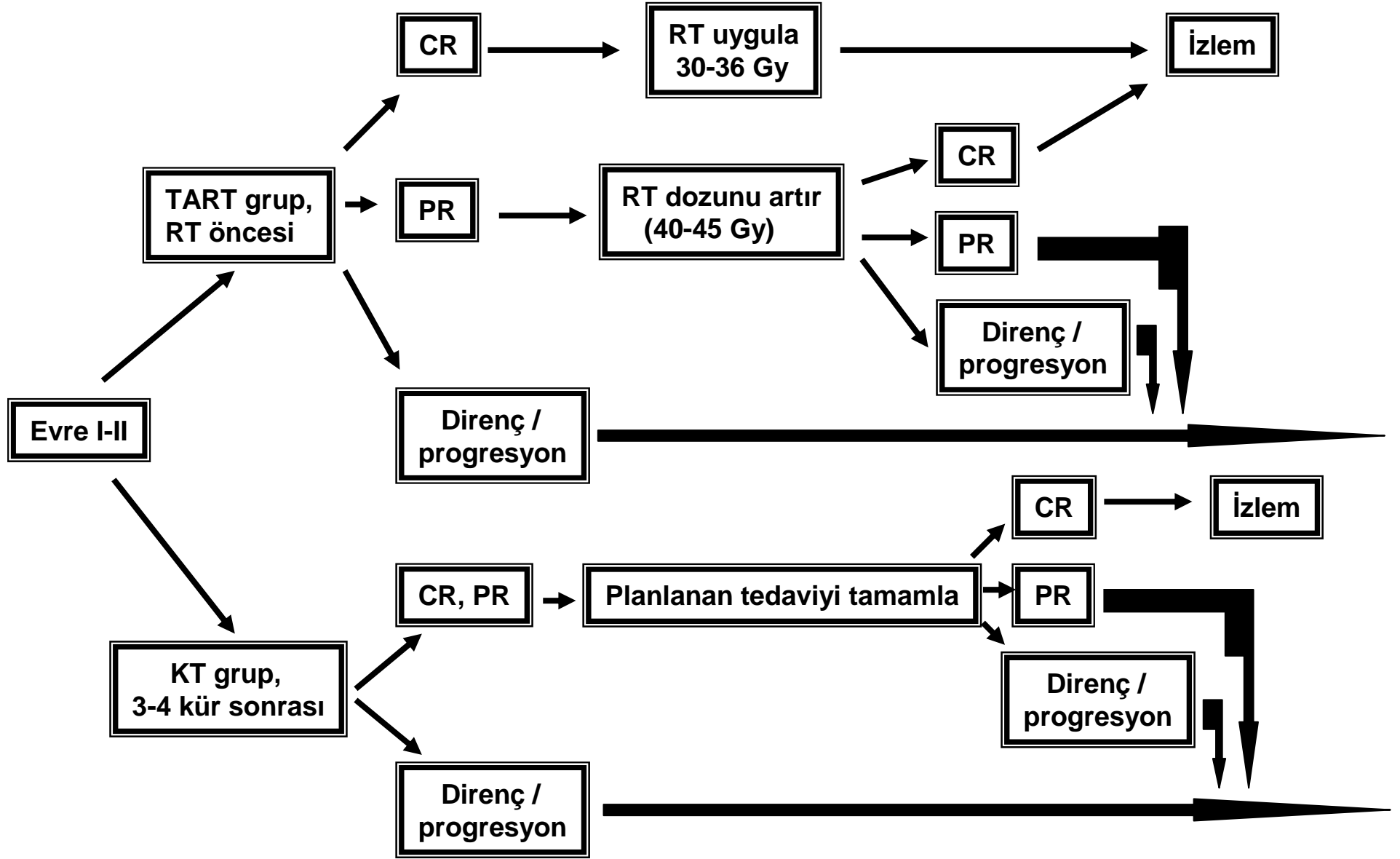
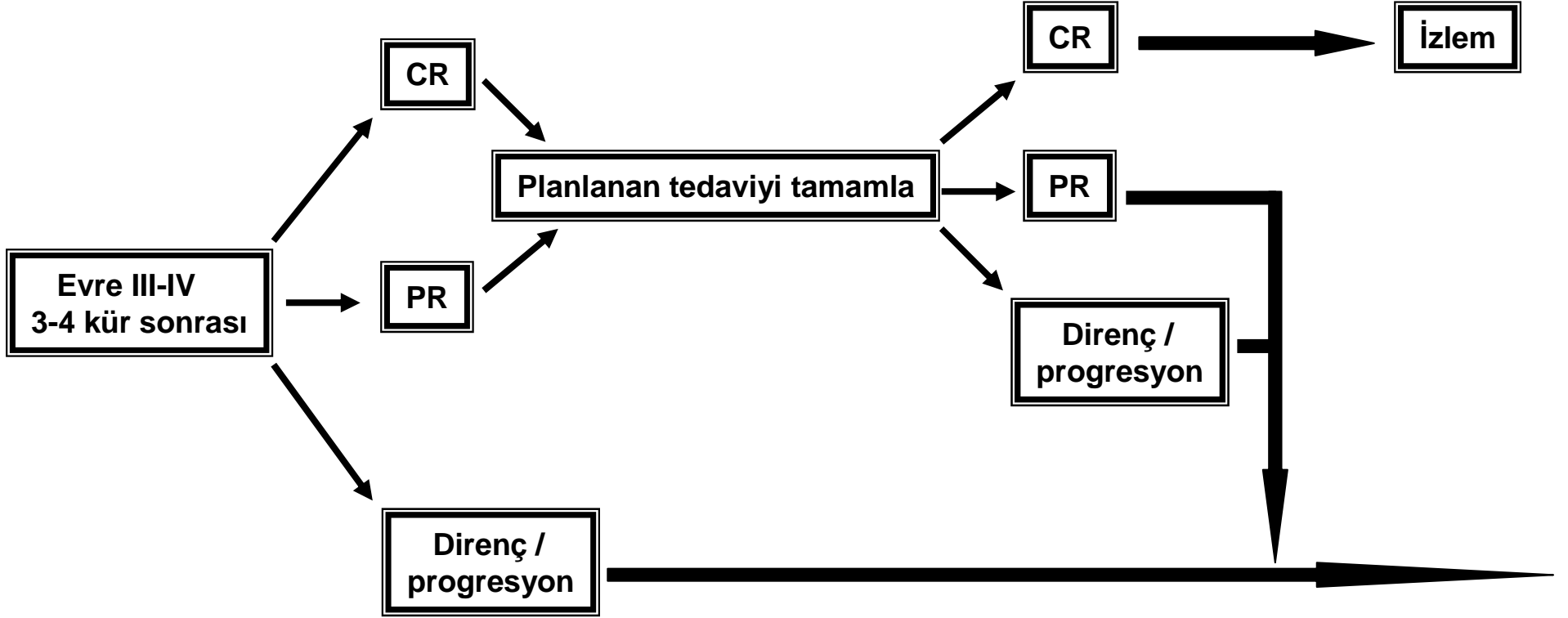
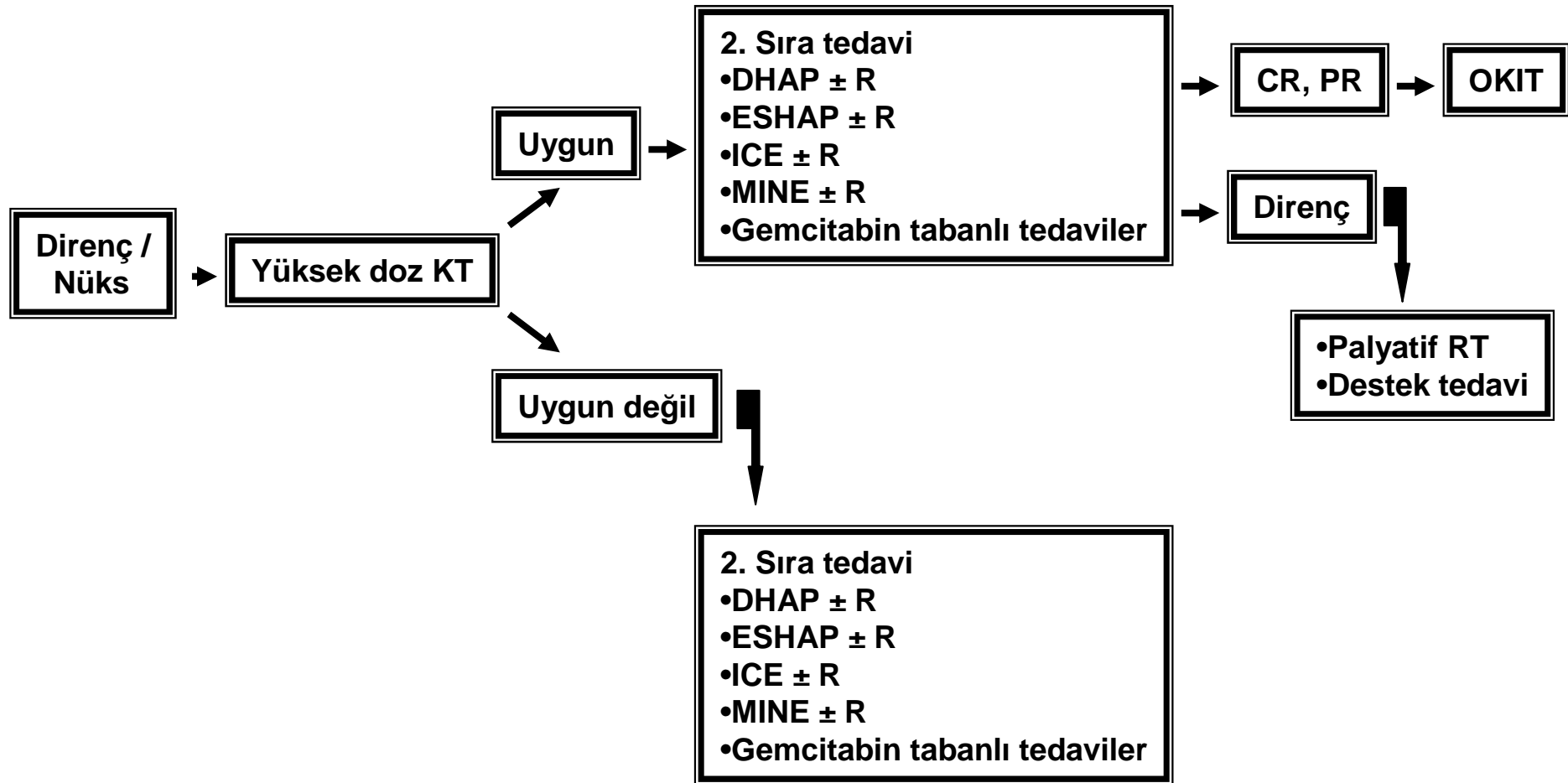


Diffüz Büyük B-Hücreli Lenfoma









Sol ventrikül işlevi bozuk hastalar

- **İlk sıra tedavide Rituksimab'a ek olarak**
 - **CEPP**
 - **CNOP**
 - **EPOCH**
 - **CEOP**

kullanılabilir

SSS profilaksisi

- Kemik iliđi
 - Sinüs
 - Paravertebral kitle
 - Testis
 - Sert damak
 - Göz
 - ≥ 2 ekstranodal tutulum
-
- Her bir siklusta IT MTX 12 mg ve/veya ARA-C 40-100 mg